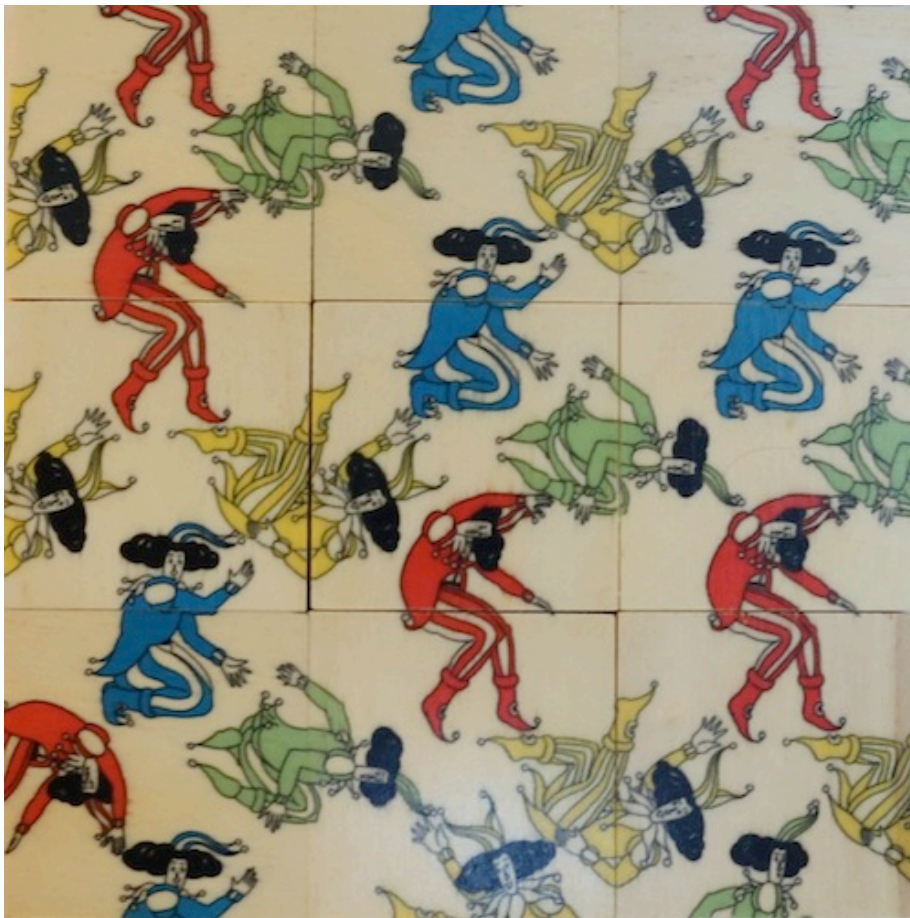


# Cluzzelei



*"Made in West Germany" by Haba.*

(3.75" x 3.75" x 1.8" cardboard box with nine wood pieces, each 1.75" x 1.75" x 7/16")

If the solution shown is rotated 135 degrees clockwise then it corresponds to the figure on the cover by mapping the four characters to the colors of the puzzle (in fact, by looking carefully, one can see a resemblance between the characters and the actual colored figures of the puzzle).

*Copyright J. A. Storer*