

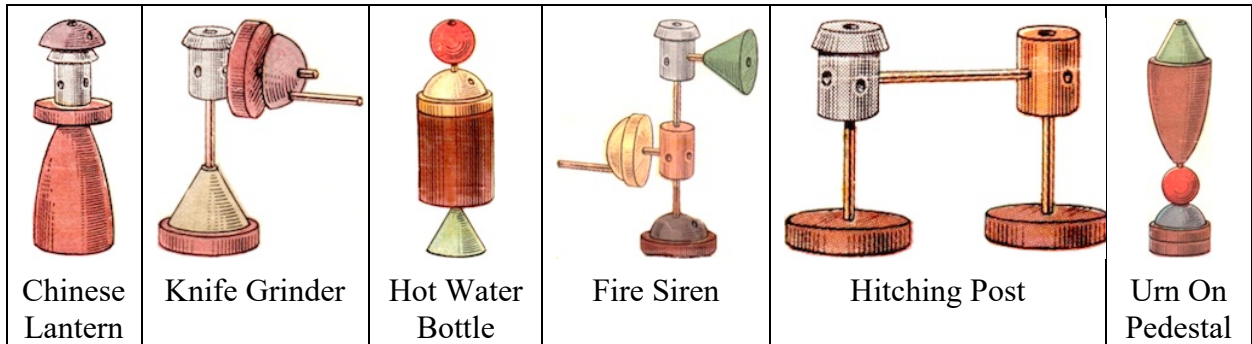
Wooden-Do-It



a.k.a. Construction Cigar, Cigar Puzzle

Garner Products and Shackman & Co., New York; circa 1950's.
 (wood pieces on metal rod with 6 short rods, 5.2" long x 3/4" diameter)

Purchased from a seller who said that it came from residual stock of *Glenn's Novelty Shop*, 16th and Market St., Philadelphia, where his father worked when the shop closed in 1959. Subsequently puzzle collector Michel van Ipenburg kindly provided a copy of the Garner directions and puzzle collector Bill Ja kindly provided a copy of the Shackman directions and also sent a much appreciated gift of a set of reproduction short rods (that were missing from this one). Both directions, shown on the following pages, show these objects to make:



The short rods are stored in the middle brown tube; from left to right in the photo above, on the left below is a photo of the left ends of the tubes and on the right a photo of the right ends:



"Wooden-Do-It" - Garner Directions

WOODEN-DO-IT

(Patents Pending)

CHINESE LANTERN

KNIFE GRINDER

DIRECTIONS FOR MAKING OBJECTS.

To Remove Parts From Wire Rod, Merely Turn and Pull. Compare Numbered Parts On Charts With Those In Your Hand. Be Sure and Build Objects in the Order Numbered. Some Combinations Are Revealed. You Are Then Expected to Assemble These Parts to Form Stated Objects. Keep Changing Around Until You Succeed.

NUMBER COMBINATIONS OF THE SIX PICTURED ILLUSTRATIONS

CHINESE LANTERN—14, 3, 13, 10, 1	KNIFE GRINDER—3, 14, 8, 13, 15, 4, 10, 18
FIRE SIREN—3, 14, 10, 11, 15, 13, 18, 8, 6, 19	STANDING BOILER—14, 3, 10, 7, 6, 15, 2
HITCHING POST—11, 14, 3, 13, 15, 4, 18	URN ON PEDESTAL—15, 3, 4, 10, 1, 16, 8

NUMBER COMBINATIONS OF 20 UNMADE OBJECTS.

LIFTING WEIGHT—17, 10, 9, 8, 7	ROLLING PIN—13, 14, 7, 9, 8, 16, 18
MOORING POST—6, 14, 11, 13, 15	SEARCHLIGHT—14, 6, 13, 16, 10
MOTOR—14, 3, 11, 15, 10, 9, 16, 13, 18, 4	STANDING BOILER—14, 13, 10, 7, 6, 15, 2
OIL LAMP—14, 8, 10, 5, 6, 15, 2, 11, 12	STOOL—10, 14, 6
PERISCOPE—13, 17, 11, 14, 15, 10, 3	TORPEDO—17, 8, 13, 12, 11, 9, 7, 2, 1
PHONOGRAPH—11, 14, 10, 4, 5, 16, 8	TELESCOPE—14, 2, 13, 15, 11, 1
PULLEY SHAFT—11, 14, 15, 4, 5, 3, 6, 17, 1	VACUUM CLEANER—13, 14, 15, 5, 3, 12, 11, 17, 2
PUNCHING BAG—17, 13, 1, 14, 11, 15, 4, 2	WEATHER VANE—17, 11, 14, 15, 8, 2, 6
RAILROAD TANK—11, 14, 7, 6, 15, 2, 17, 1	WINDMILL—10, 9, 17, 6, 11, 2, 15, 8, 16, 13, 18, 19, 20, 14
RAILROAD SWITCH—11, 14, 3, 17, 2, 15, 8, 13, 16, 6, 7	ZEPPELIN—17, 1, 2, 9, 10, 7, 12, 13, 8, 15, 11

HOT WATER BOILER

FIRE SIREN

HERE IS A PARTIAL LIST (48) OF THE 200 POSSIBLE OBJECTS.

ASH HOIST	FLOWER POT	LAWN MOWER
BEE HIVE	FRUIT DISH	LAWN ROLLER
CHURCH STEEPLE	GASOLINE TANK	LAWN SHADE
CIDER PRESS	GAUGE	LIGHTHOUSE
COLLAR BUTTON	GIMLET	LUMBER WAGON
CRANKSHAFT	GOLF TEE	MALLET, BEER
CROSS, GREEK	GRIST GRINDER	MICROPHONE
DIVING POLE	GROUND ROLLER	MILK BOTTLE
DOVE'S COTE	HAND GRENADE	NAVAL TORPEDO
DRAG ANCHOR	HAT PIN	OLD STYLE GIG
DRUMSTICK	HAT RACK	ORNAMENTAL MAYPOLE
DUMBBELL	HOUR GLASS	PIVOT SEARCHLIGHT
DYNAMO	HURDLE	POTATO WASHER
FARM HARROW	HYDRAULIC JACK	REVOLVING TURNSTILE
FIRE HYDRANT	LABORER'S PICK	RHINE WINE BOTTLE
FLAG POLE	LAMP, FLOOR	SCALES

HITCHING POST

URN ON PEDESTAL

Solutions to All Objects Are Revealed In An Illustrated Booklet. Can Be Had Through Your Dealer. Price 10c. Get One. See Why You Failed in Many Cases.

GARNER PRODUCTS, INC.
NEW YORK

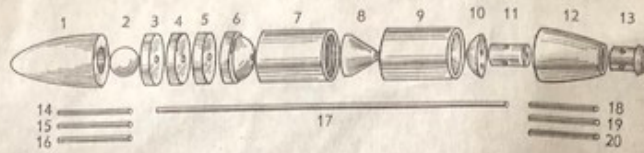
"Construction Cigar" - Shackman Directions

CONSTRUCTION CIGAR

AN AMAZING WOODEN CONSTRUCTION PUZZLE.
COMPACT AND COMPLICATED. SUITABLE FOR ADULTS AND OLDER CHILDREN.



CHINESE LANTERN



KNIFE GRINDER

DIRECTIONS FOR MAKING OBJECTS.

To Remove Parts From Wire Rod, Merely Turn and Pull. Compare Numbered Parts On Charts With Those In Your Hand. Be Sure and Build Objects in the Order Numbered. Some Combinations Are Revealed. You Are Then Expected to Assemble These Parts to Form Stated Objects. Keep Changing Around Until You Succeed.

NUMBER COMBINATIONS OF THE SIX PICTURED ILLUSTRATIONS.

- | | |
|--|---|
| CHINESE LANTERN — 14, 3, 13, 10, 1 | KNIFE GRINDER — 3, 14, 8, 13, 15, 4, 10, 18 |
| FIRE SIREN — 3, 14, 10, 11, 15, 13, 18, 8, 6, 19 | STANDING BOILER — 14, 3, 10, 7, 6, 15, 2 |
| HITCHING POST — 11, 14, 3, 13, 15, 4, 18 | URN ON PEDESTAL — 15, 3, 4, 10, 1, 16, 8 |

NUMBER COMBINATIONS OF 20 UNMADE OBJECTS.



HOT WATER BOILER

- LIFTING WEIGHT — 17, 10, 9, 8, 7
- MOORING POST — 6, 14, 11, 13, 15
- MOTOR — 14, 3, 11, 15, 10, 9, 16, 13, 18, 4
- OIL LAMP — 14, 8, 10, 5, 6, 15, 2, 11, 12
- PERISCOPE — 13, 17, 11, 14, 15, 10, 3
- PHONOGRAPH — 11, 14, 10, 4, 5, 16, 8
- PULLEY SHAFT — 11, 14, 15, 4, 5, 3, 6, 17, 1
- PUNCHING BAG — 17, 13, 1, 14, 11, 15, 4, 2
- RAILROAD TANK — 11, 14, 7, 6, 15, 2, 17, 1
- RAILROAD SWITCH — 11, 14, 3, 17, 2, 15, 8, 13, 16, 6, 7

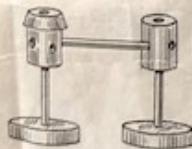
- ROLLING PIN — 13, 14, 7, 9, 8, 16, 18
- SEARCHLIGHT — 14, 6, 13, 16, 10
- STANDING BOILER — 14, 13, 10, 7, 6, 15, 2
- STOOL — 10, 14, 6
- TORPEDO — 17, 8, 13, 12, 11, 9, 7, 2, 1
- TELESCOPE — 14, 2, 13, 15, 11, 1
- VACUUM CLEANER — 13, 14, 15, 5, 3, 12, 11, 17, 2
- WEATHER VANE — 17, 11, 14, 15, 8, 2, 6
- WINDMILL — 10, 9, 17, 6, 11, 2, 15, 8, 16, 13, 18, 19, 20, 14
- ZEPPELIN — 17, 1, 2, 9, 10, 7, 12, 13, 8, 15, 11



FIRE SIREN

HERE IS A PARTIAL LIST (48) OF THE 200 POSSIBLE OBJECTS.

- | | | |
|----------------|----------------|---------------------|
| ASH HOIST | FLOWER POT | LAWN MOWER |
| BEE HIVE | FRUIT DISH | LAWN ROLLER |
| CHURCH STEEPLE | GASOLINE TANK | LAWN SHADE |
| CIDER PRESS | GAUGE | LIGHTHOUSE |
| COLLAR BUTTON | GIMLET | LUMBER WAGON |
| CRANKSHAFT | GOLF TEE | MALLET, BEER |
| CROSS, GREEK | GRIST GRINDER | MICROPHONE |
| DIVING POLE | GROUND ROLLER | MILK BOTTLE |
| DOVE'S COTE | HAND GRENADE | NAVAL TORPEDO |
| DRAG ANCHOR | HAT PIN | OLD STYLE GIG |
| DRUMSTICK | HAT RACK | ORNAMENTAL MAYPOLE |
| DUMBBELL | HOUR GLASS | PIVOT SEARCHLIGHT |
| DYNAMO | HURDLE | POTATO MASHER |
| FARM HARROWER | HYDRAULIC JACK | REVOLVING TURNSTILE |
| FIRE HYDRANT | LABORER'S PICK | RHINE WINE BOTTLE |
| FLAG POLE | LAMP, FLOOR | SCALES |



HITCHING POST



URN ON PEDESTAL

MANY OTHER OBJECTS CAN BE MADE DEPENDING UPON YOUR SKILL AND PATIENCE.

B. SHACKMAN & CO.
71 MADISON AVE
NEW YORK 16. N.Y.

MADE IN WESTERN GERMANY

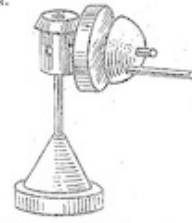
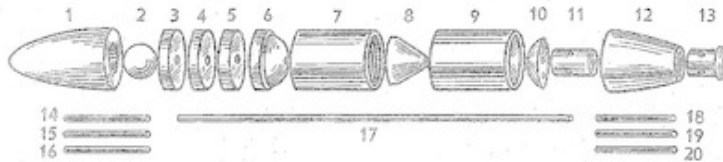
Shackman Directions Scanned

CONSTRUCTION CIGAR

AN AMAZING WOODEN CONSTRUCTION PUZZLE.
COMPACT AND COMPLICATED. SUITABLE FOR ADULTS AND OLDER CHILDREN.



CHINESE LANTERN



KNIFE GRINDER

DIRECTIONS FOR MAKING OBJECTS.

To Remove Parts From Wire Rod, Merely Turn and Pull. Compare Numbered Parts On Charts With Those In Your Hand. Be Sure and Build Objects in the Order Numbered. Some Combinations Are Revealed. You Are Then Expected to Assemble These Parts to Form Stated Objects. Keep Changing Around Until You Succeed.

NUMBER COMBINATIONS OF THE SIX PICTURED ILLUSTRATIONS.

CHINESE LANTERN — 14, 3, 13, 10, 1
FIRE SIREN — 3, 14, 10, 11, 15, 13, 18, 8, 6, 19
HITCHING POST — 11, 14, 3, 13, 15, 4, 18

KNIFE GRINDER — 3, 14, 8, 13, 15, 4, 10, 18
STANDING BOILER — 14, 3, 10, 7, 6, 15, 2
URN ON PEDESTAL — 15, 3, 4, 10, 1, 16, 8

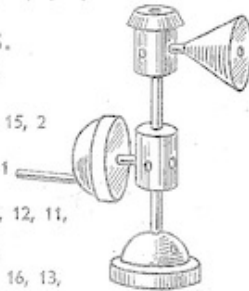
NUMBER COMBINATIONS OF 20 UNMADE OBJECTS.



HOT WATER BOILER

LIFTING WEIGHT — 17, 10, 9, 8, 7
MOORING POST — 6, 14, 11, 13, 15
MOTOR — 14, 3, 11, 15, 10, 9, 16, 13, 18, 4
OIL LAMP — 14, 8, 10, 5, 6, 15, 2, 11, 12
PERISCOPE — 13, 17, 11, 14, 15, 10, 3
PHONOGRAPH — 11, 14, 10, 4, 5, 16, 8
PULLEY SHAFT — 11, 14, 15, 4, 5, 3, 6, 17, 1
PUNCHING BAG — 17, 13, 1, 14, 11, 15, 4, 2
RAILROAD TANK — 11, 14, 7, 6, 15, 2, 17, 1
RAILROAD SWITCH — 11, 14, 3, 17, 2,
15, 8, 13, 16, 6, 7

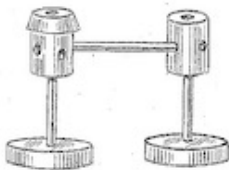
ROLLING PIN — 13, 14, 7, 9, 8, 16, 18
SEARCHLIGHT — 14, 6, 13, 16, 10
STANDING BOILER — 14, 13, 10, 7, 6, 15, 2
STOOL — 10, 14, 6
TORPEDO — 17, 8, 13, 12, 11, 9, 7, 2, 1
TELESCOPE — 14, 2, 13, 15, 11, 1
VACUUM CLEANER — 13, 14, 15, 5, 3, 12, 11,
17, 2
WEATHER VANE — 17, 11, 14, 15, 8, 2, 6
WINDMILL — 10, 9, 17, 6, 11, 2, 15, 8, 16, 13,
18, 19, 20, 14
ZEPPELIN — 17, 1, 2, 9, 10, 7, 12, 13, 8, 15, 11



FIRE SIREN

HERE IS A PARTIAL LIST (40) OF THE 200 POSSIBLE OBJECTS.

ASH HOIST	FLOWER POT	LAWN MOWER
BEE HIVE	FRUIT DISH	LAWN ROLLER
CHURCH STEEPLE	GASOLINE TANK	LAWN SHADE
CIDER PRESS	GAUGE	LIGHTHOUSE
COLLAR BUTTON	GIMLET	LUMBER WAGON
CRANKSHAFT	GOLF TEE	MALLET, BEER
CROSS, GREEK	GRIST GRINDER	MICROPHONE
DIVING POLE	GROUND ROLLER	MILK BOTTLE
DOVE'S COTE	HAND GRENADE	NAVAL TORPEDO
DRAG ANCHOR	HAT PIN	OLD STYLE GIG
DRUMSTICK	HAT RACK	ORNAMENTAL MAYPOLE
DUMBBELL	HOUR GLASS	PIVOT SEARCHLIGHT
DYNAMO	HURDLE	POTATO MASHER
FARM HARROWER	HYDRAULIC JACK	REVOLVING TURNSTILE
FIRE HYDRANT	LABORER'S PICK	RHINE WINE BOTTLE
FLAG POLE	LAMP, FLOOR	SCALES



HITCHING POST



URN ON PEDESTAL

MANY OTHER OBJECTS CAN BE MADE DEPENDING UPON YOUR SKILL AND PATIENCE.

B. SHACKMAN & CO.

71 MADISON AVE

NEW YORK 16. N.Y.

MADE IN WESTERN GERMANY

Sample Assembly - "Fire Siren"

