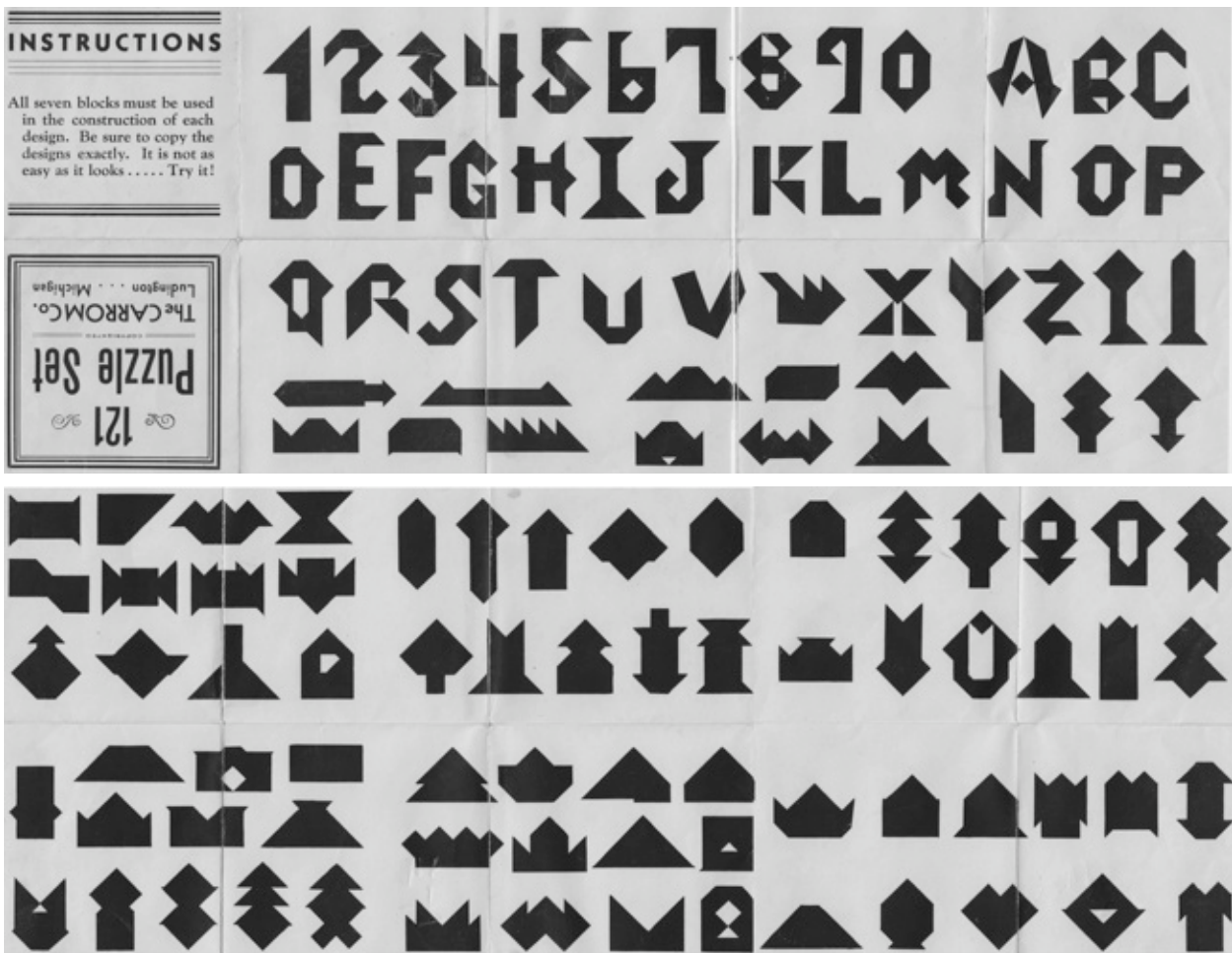


121 Puzzles



Carrom Co., Ludington, Michigan, circa 1960?
 (cardboard box and 7 wood pieces, 3.6 inches square by 9/16 inches thick)

Like the *Anchor Puzzle Tangram*, the directions that were sold with this puzzle give a host of patterns to make from seven pieces similar to those of the Tangram.