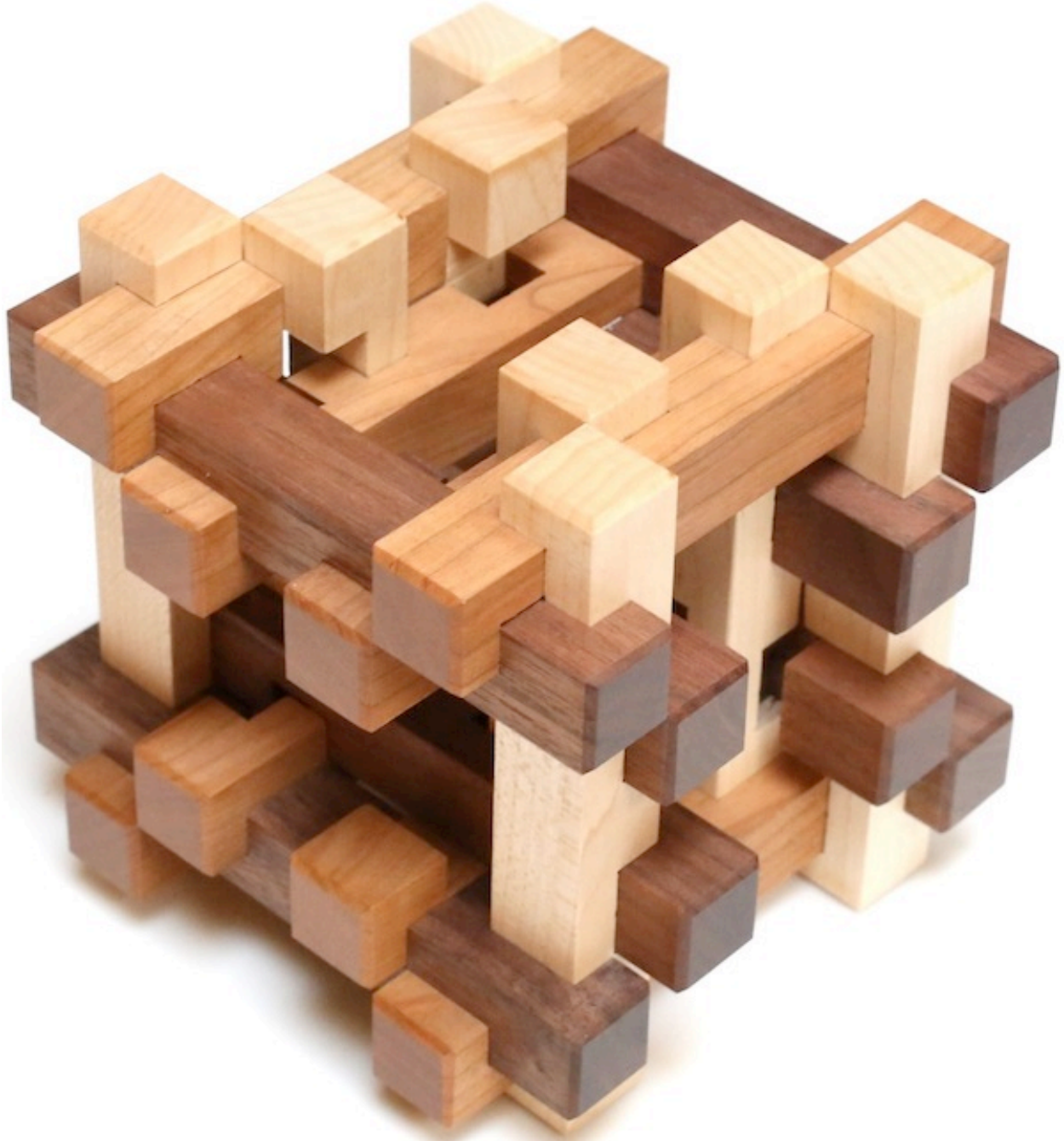


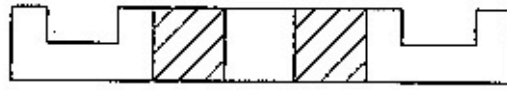
Visible Burr



*Designed by Bill Cutler 1978, made by J. McFarland 2012.
(24 Maple, Walnut, and Cherry 3/4" rods, 5.25" square assembled)*

Copyright J. A. Storer

Visible Burr Solution Page 0
 (copyright by and courtesy of Bill Cutler)



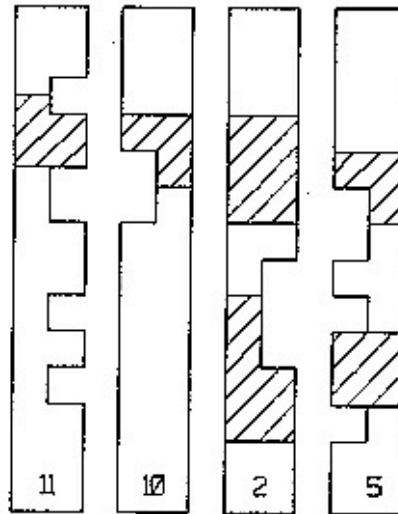
12 pieces - 4 of each wood

Assembly Instructions:

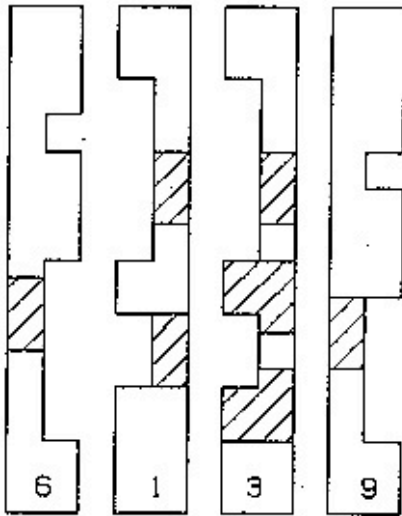
- 1) Assemble 12 identical pieces
- 2) Add pieces numbered 1-12 in numerical order

Disassembly:

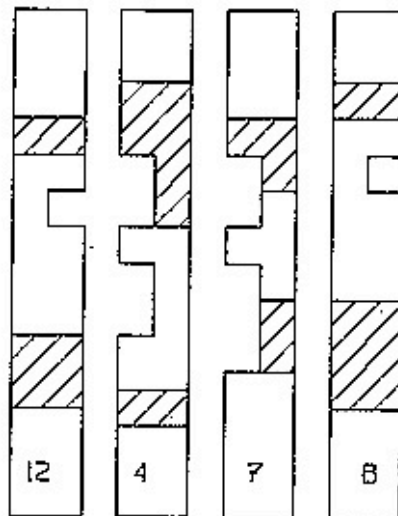
Piece #12 is first to come out, followed by #11, #10, etc.



Cherry (top-bottom)



Maple (up-down)



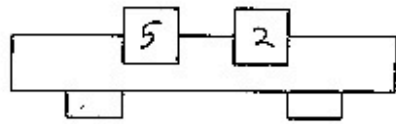
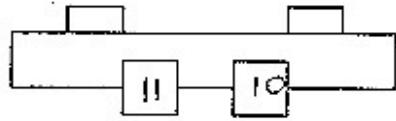
Walnut (left-right)

Copyright 1978 Bill Cutler Puzzles, Inc. All rights reserved.

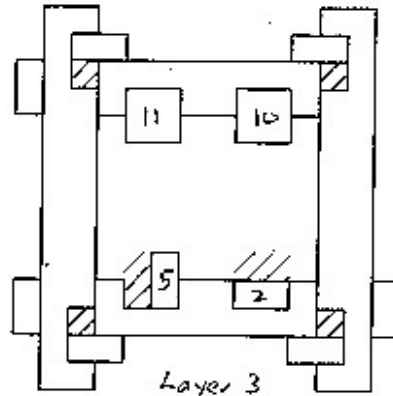
Visible Burr Solution Page 1
 (copyright by and courtesy of Bill Cutler)

Visible Burr - Layers - Page 1

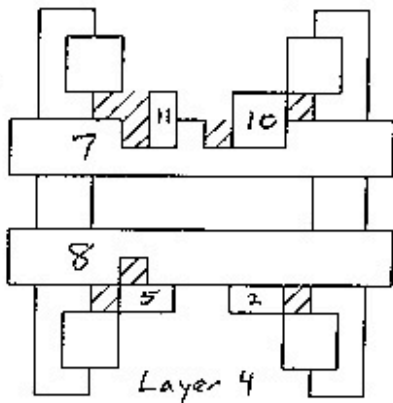
Top



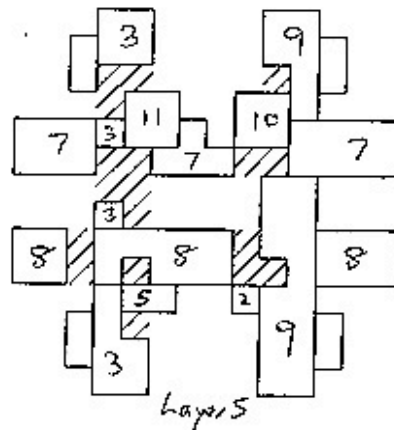
Layer 2



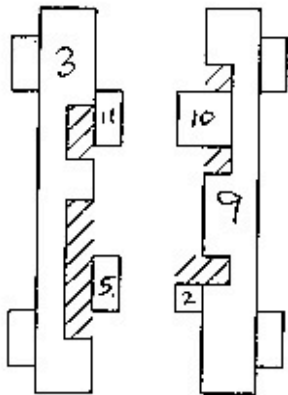
Layer 3



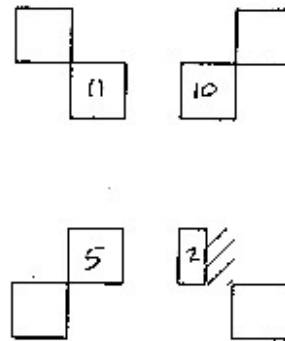
Layer 4



Layer 5



Layer 6

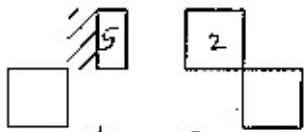
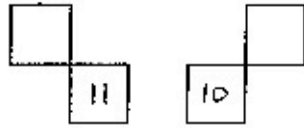


Layer 7

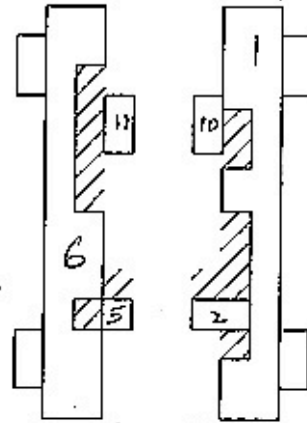
Layers 1 and 14 same as Layer 7 with no holes

Visible Burr Solution Page 2
 (copyright by and courtesy of Bill Cutler)

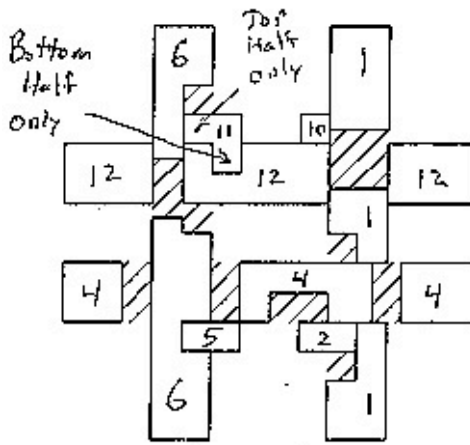
Visible Burr - Layers - Page 2



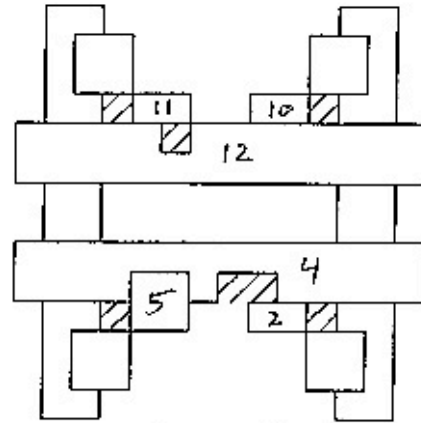
Layer 8



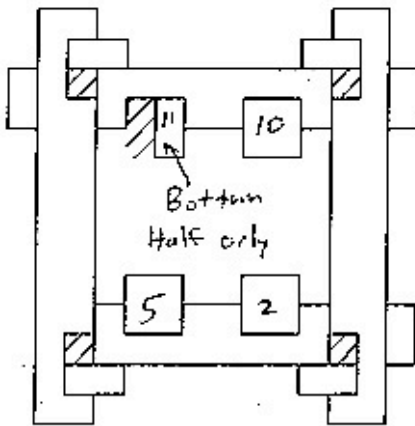
Layer 9



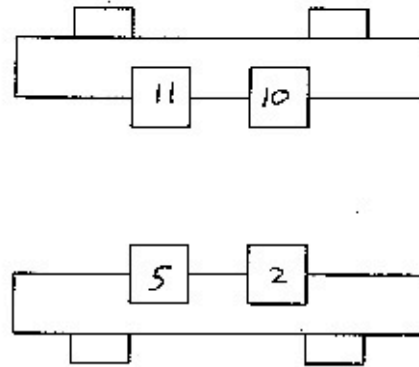
Layer 10



Layer 11



Layer 12



Layer 13